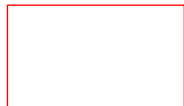
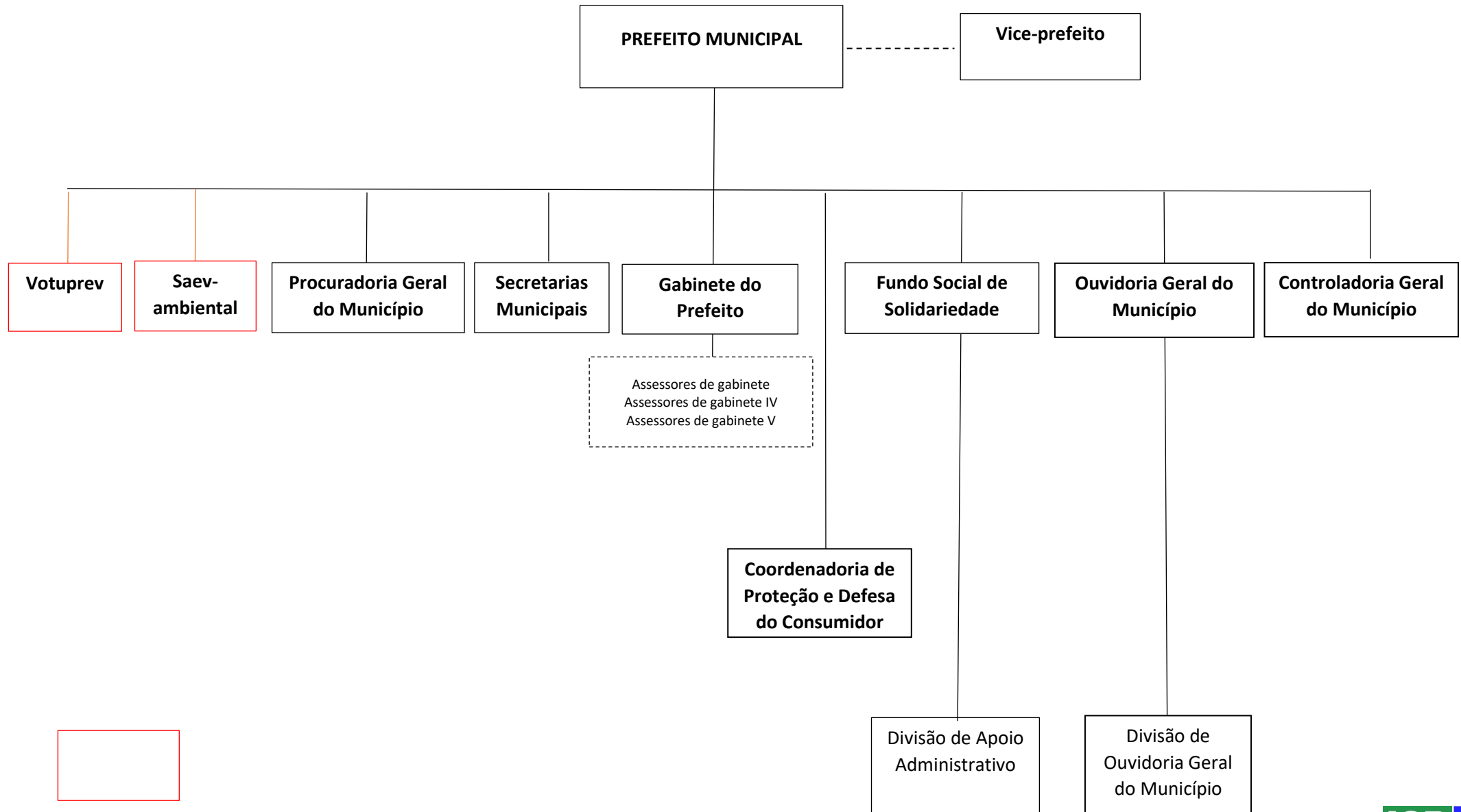


ANEXO V - ORGANOGRAMAS

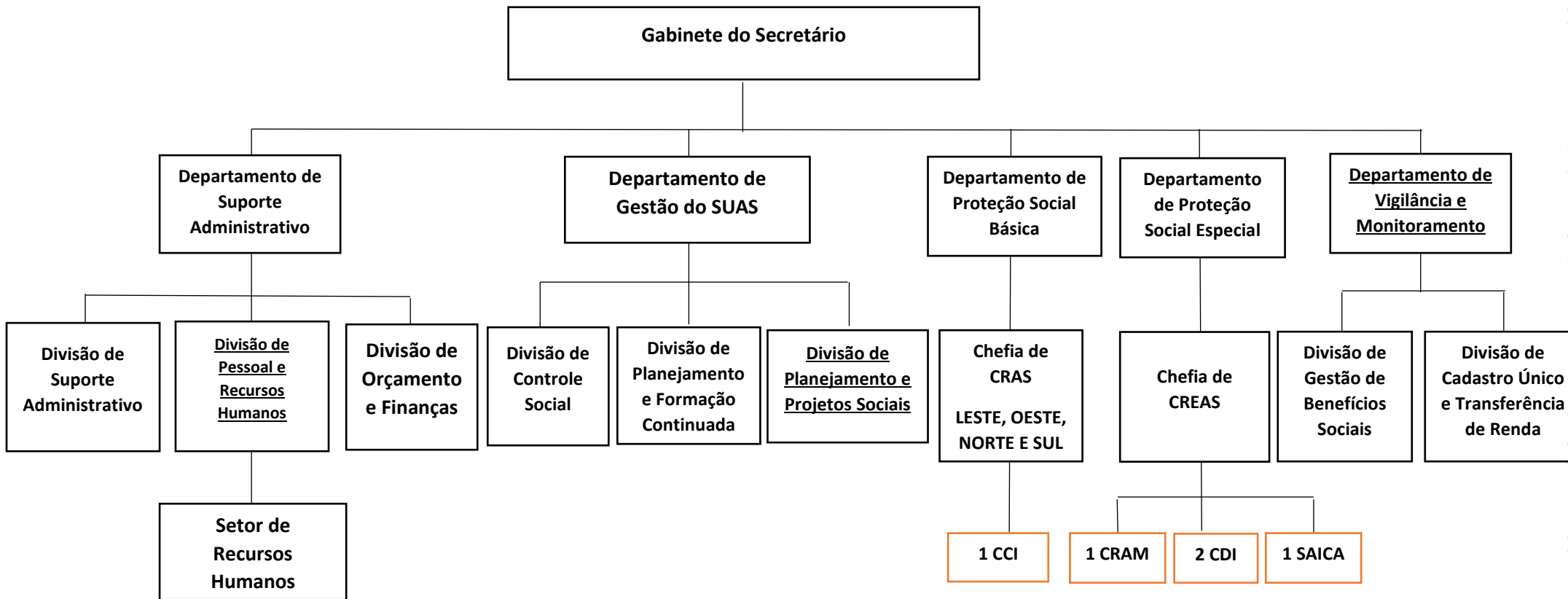
PREFEITURA DO MUNICÍPIO DE VOTUPORANGA



Obs.: órgãos da administração indireta.



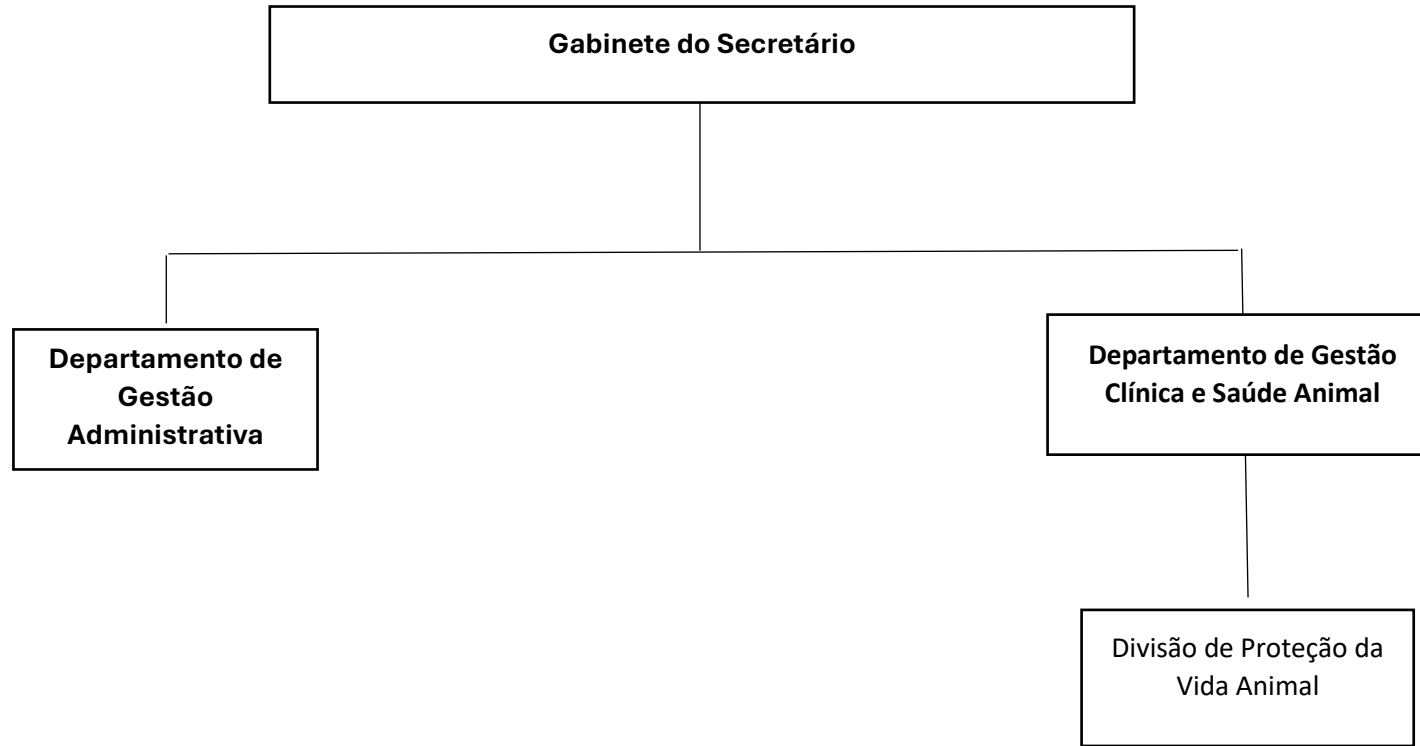
SECRETARIA MUNICIPAL DE ASSISTÊNCIA SOCIAL E DE DESENVOLVIMENTO SOCIAL - SEASO



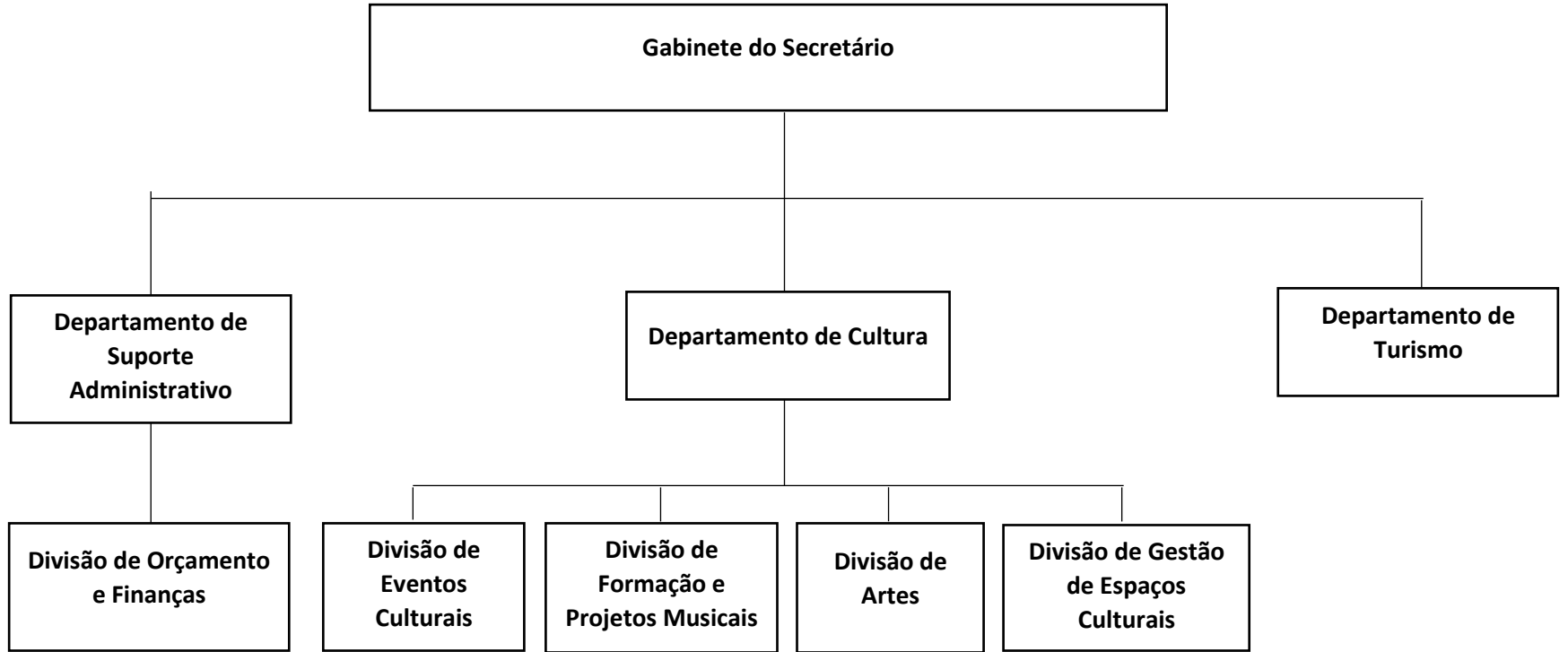
Obs.: órgãos dirigidos por servidores efetivos com função gratificada.



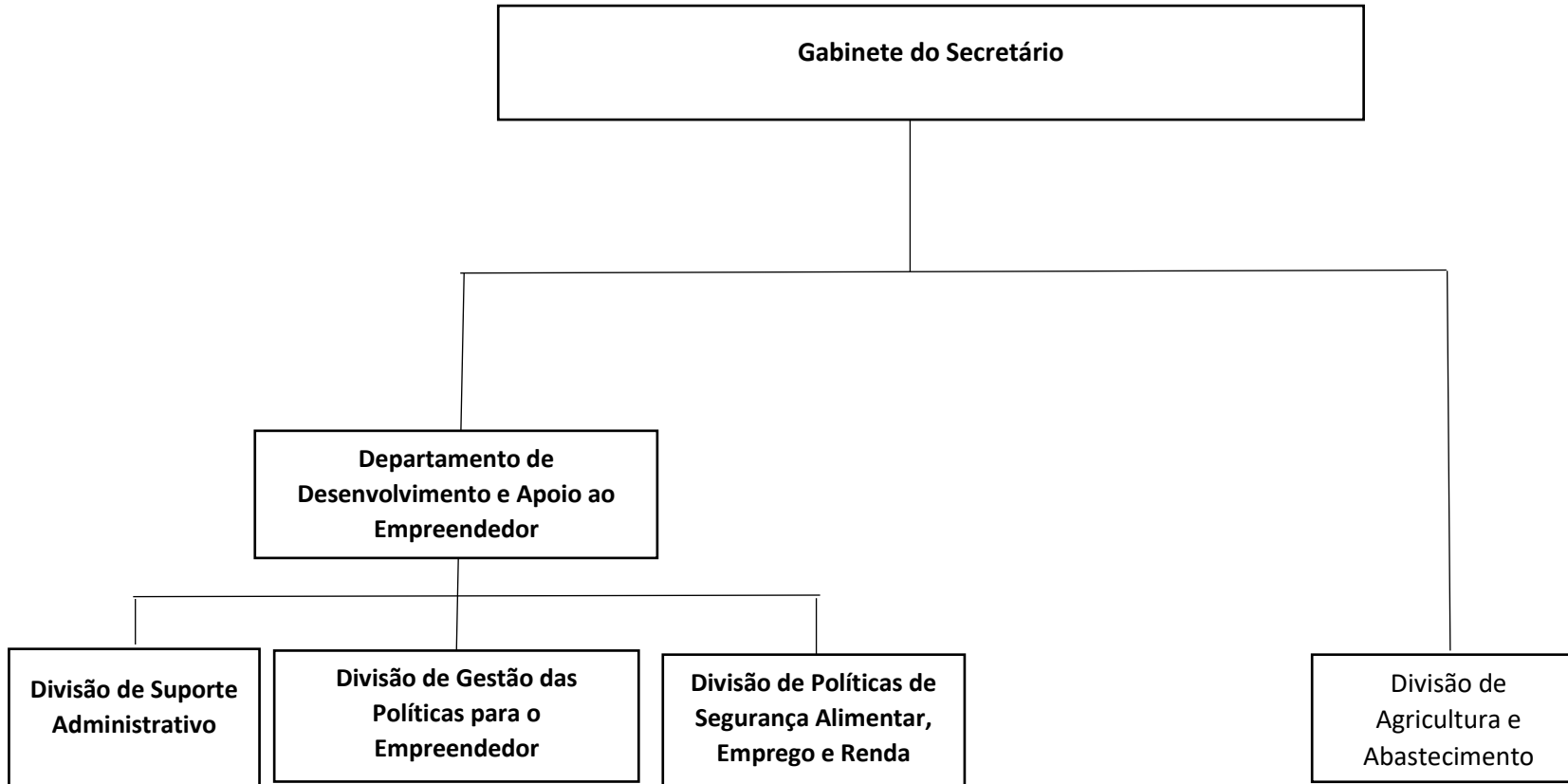
SECRETARIA MUNICIPAL DE BEM-ESTAR ANIMAL - SEBEA



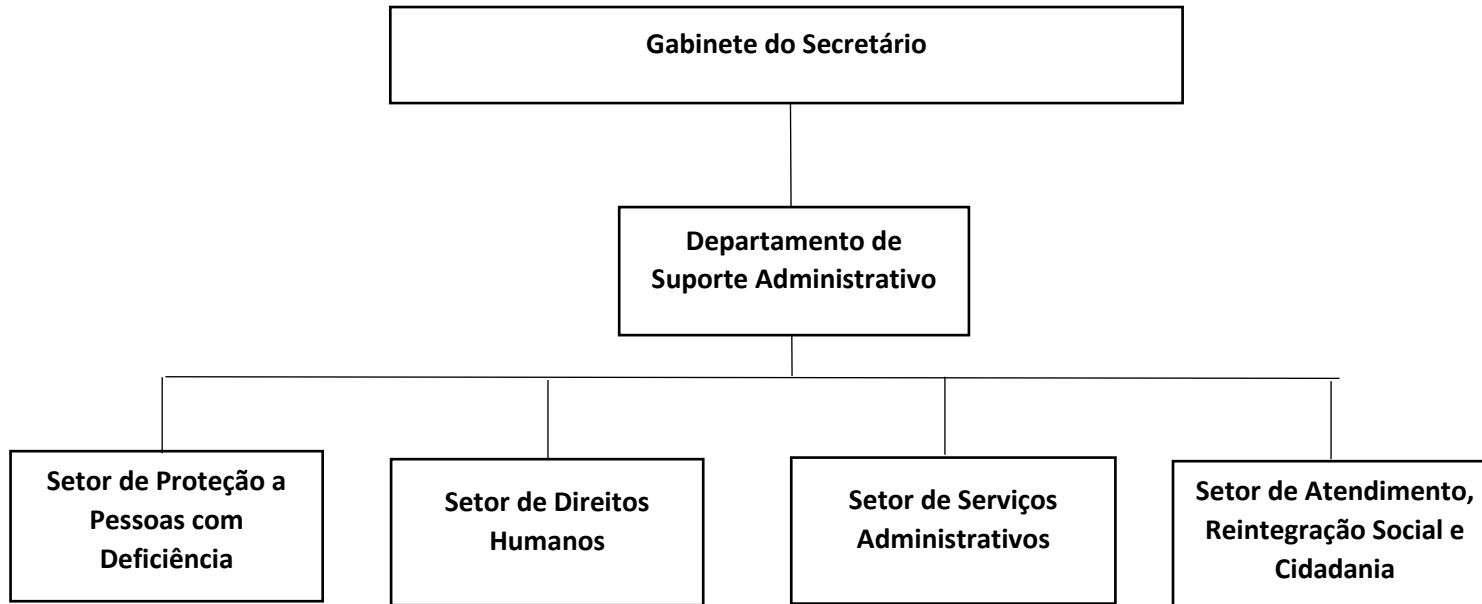
SECRETARIA MUNICIPAL DE CULTURA E TURISMO - SECULT



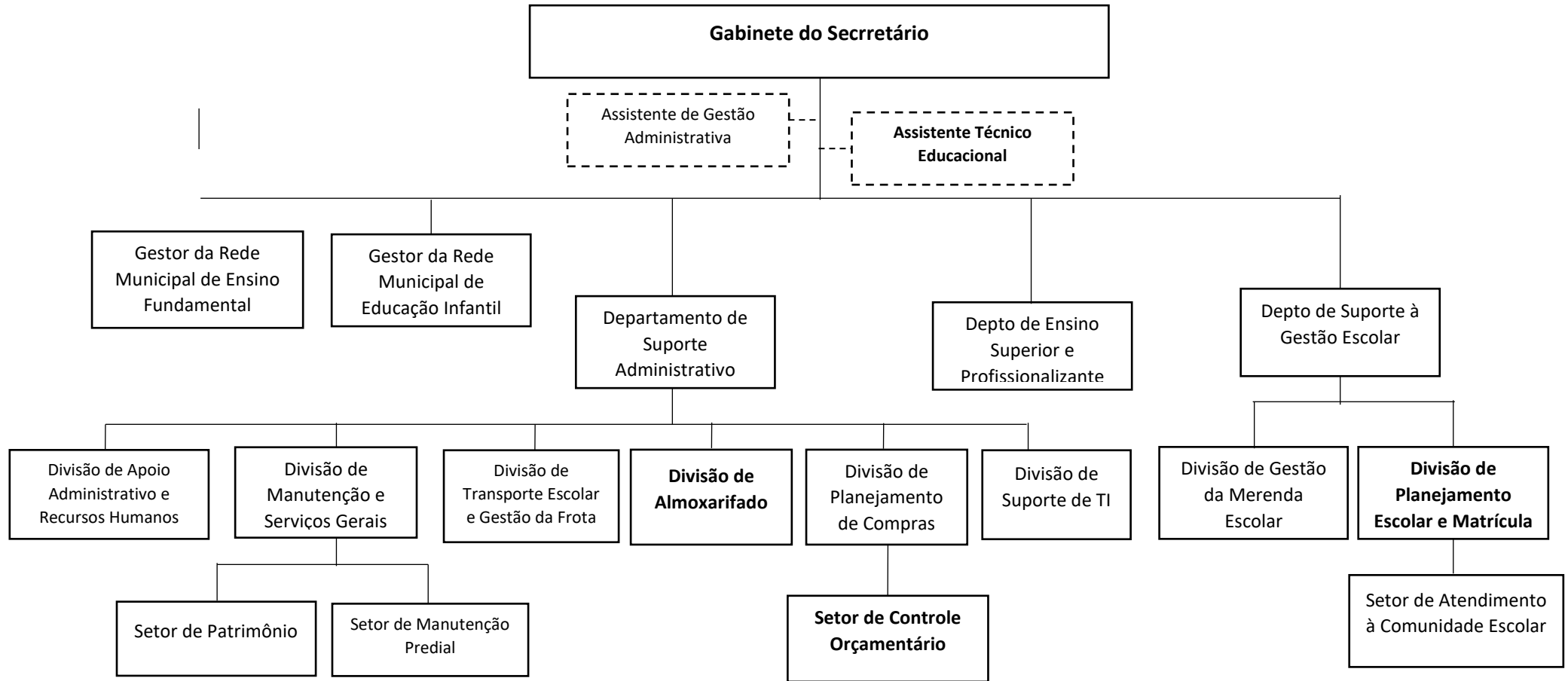
SECRETARIA MUNICIPAL DE DESENVOLVIMENTO ECONÔMICO -SEDEC



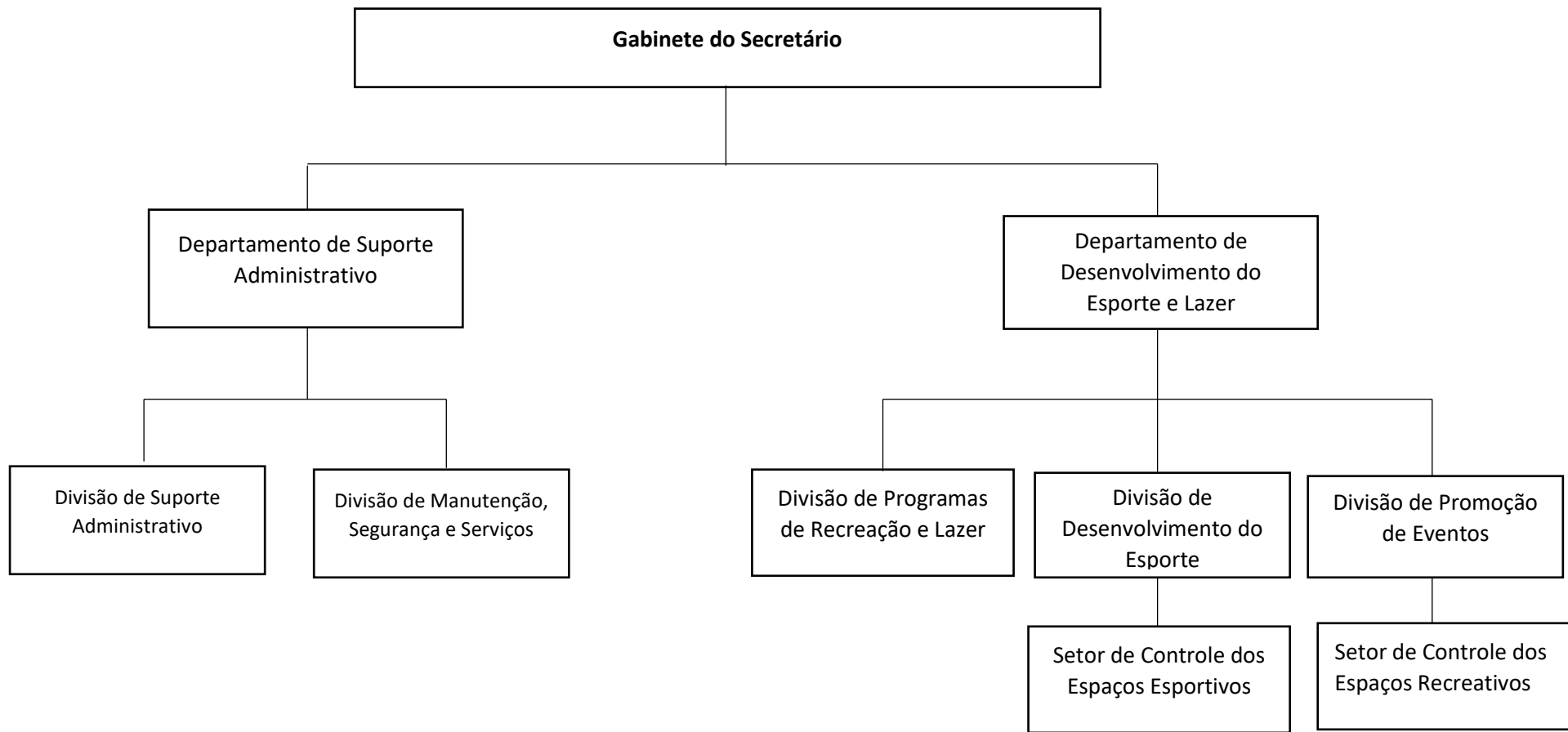
SECRETARIA MUNICIPAL DE DIREITOS HUMANOS - SEDIH



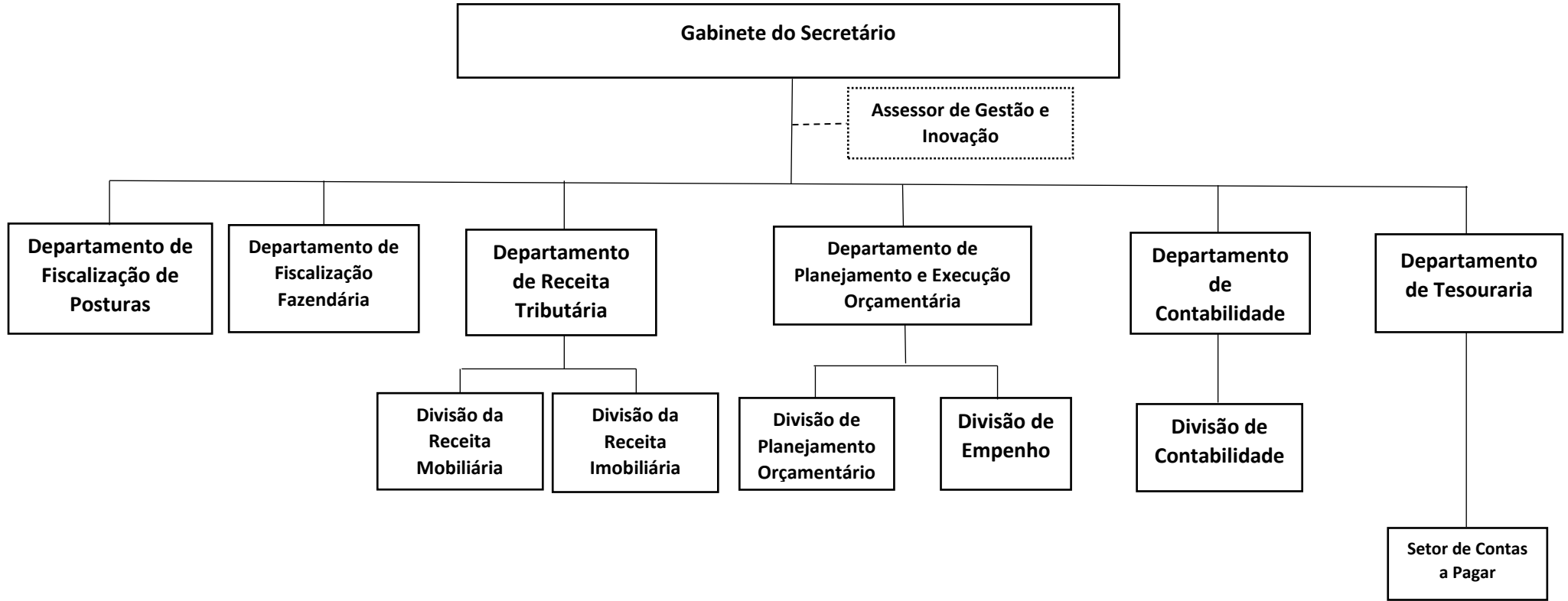
SECRETARIA MUNICIPAL DA EDUCAÇÃO - SEEDU



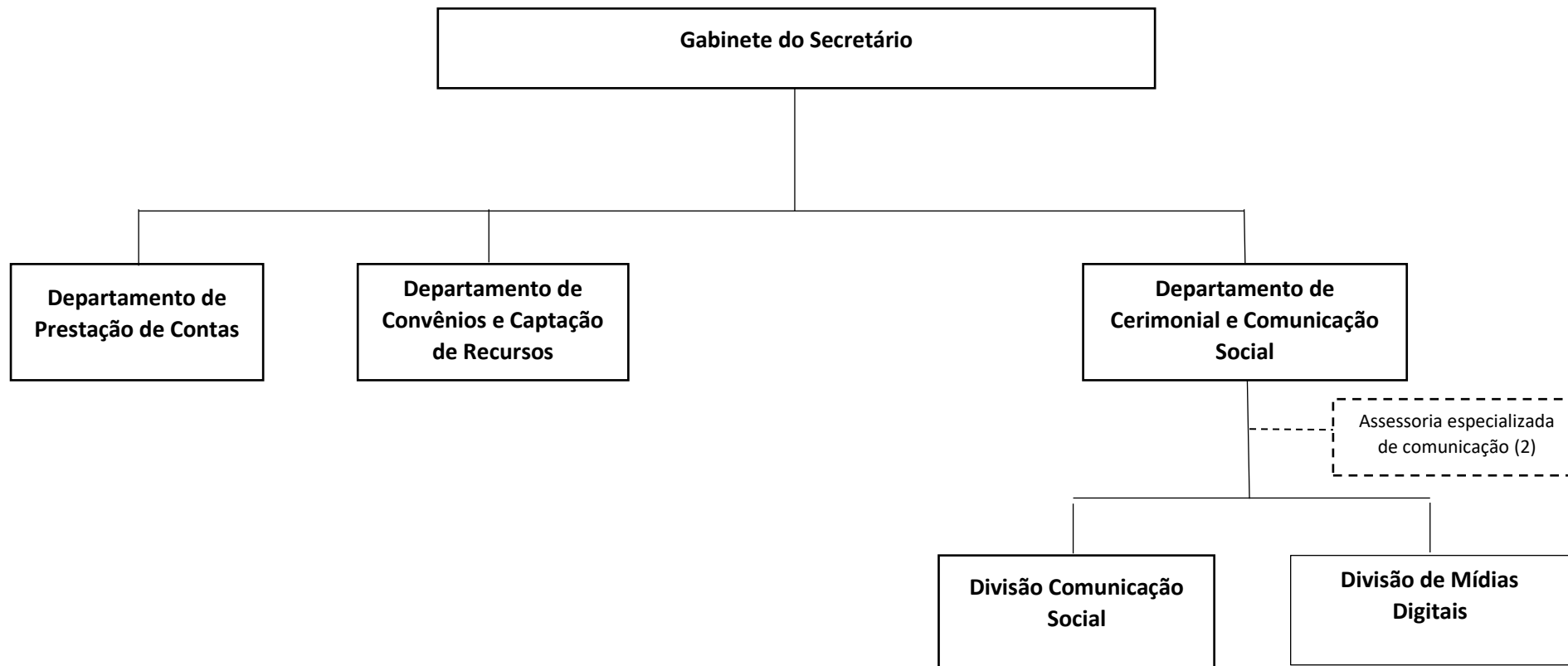
SECRETARIA MUNICIPAL DE ESPORTE E LAZER - SEEL



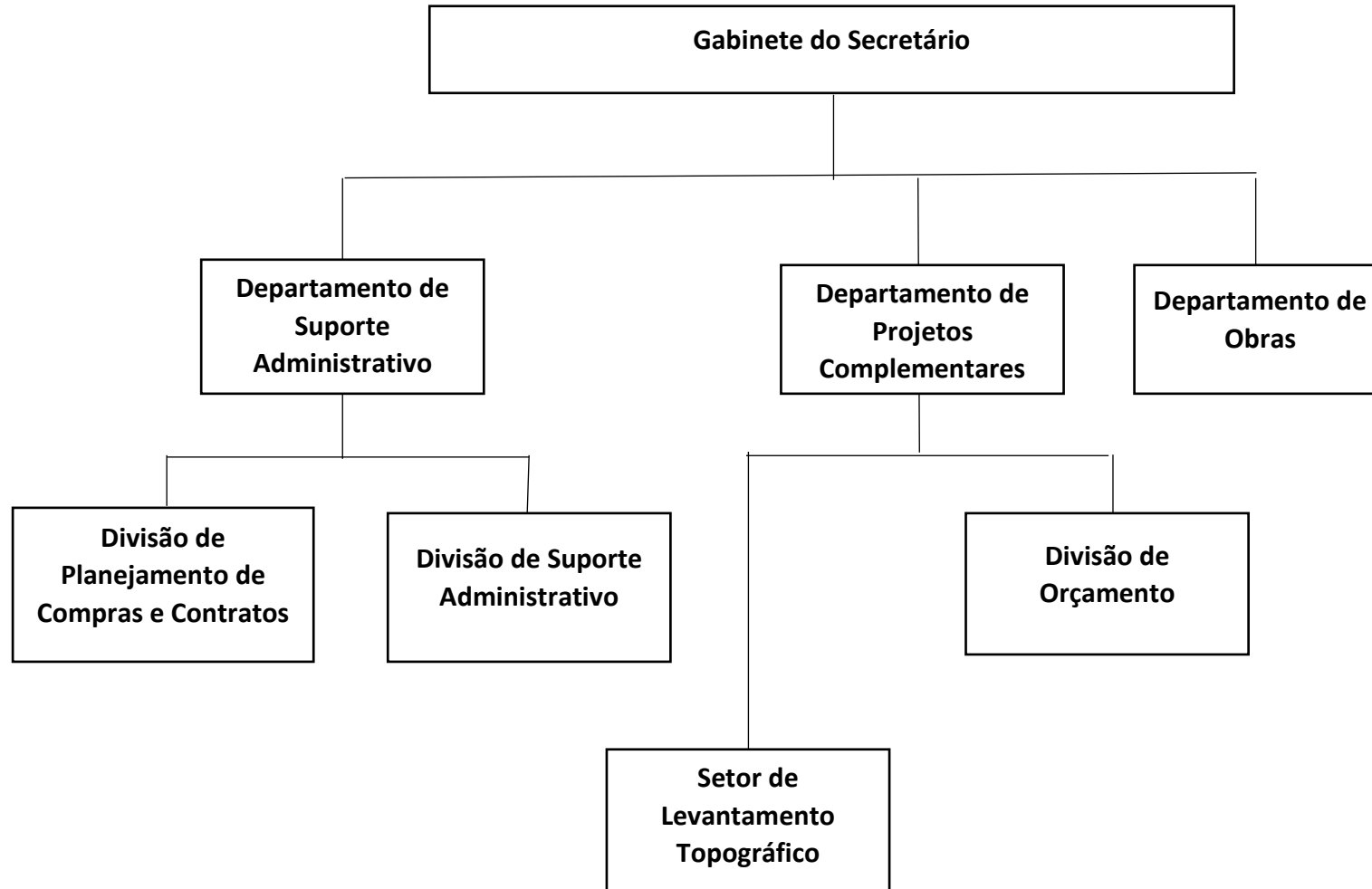
SECRETARIA MUNICIPAL DA FAZENDA - SEFAZ



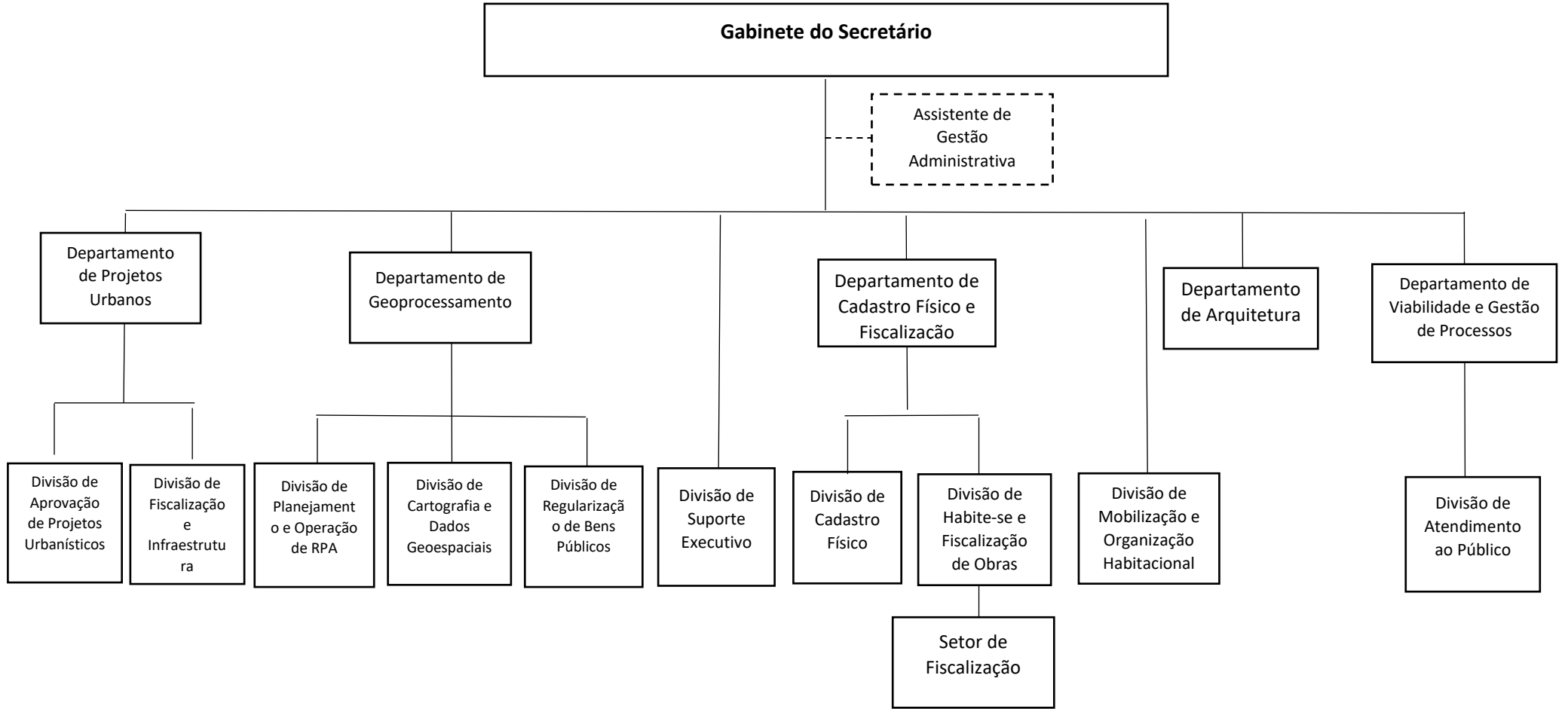
SECRETARIA MUNICIPAL DE GOVERNO - SEGOV



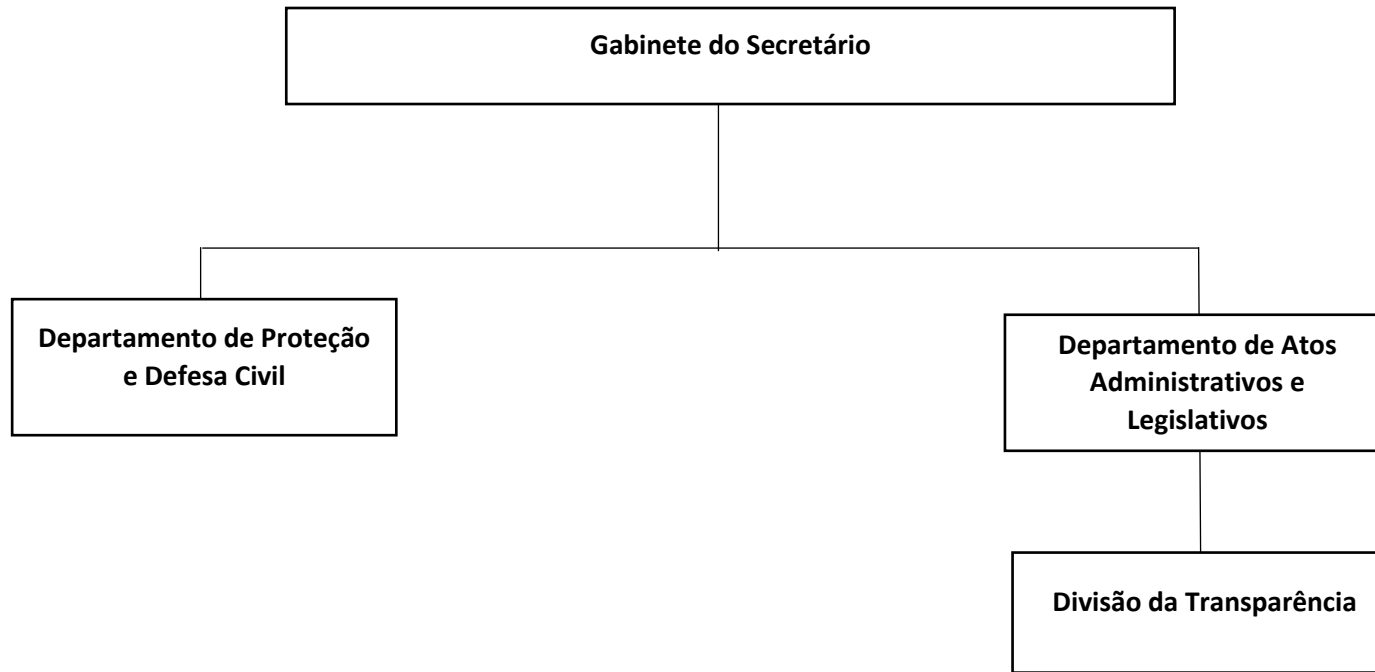
SECRETARIA MUNICIPAL DE OBRAS PÚBLICAS - SEMOP



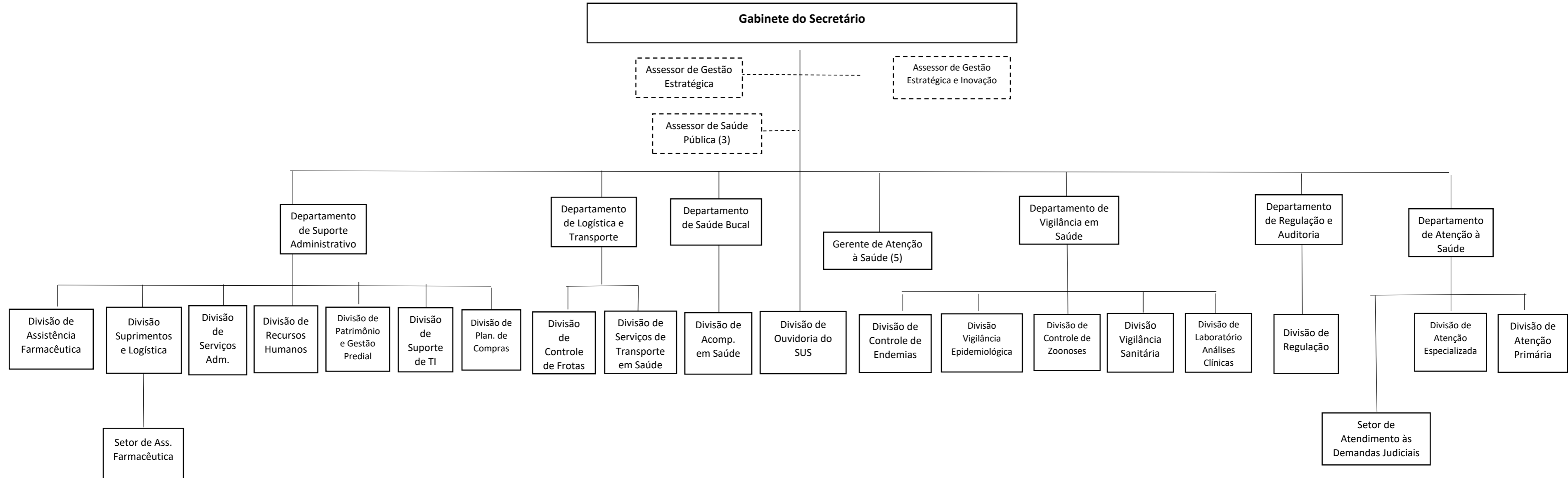
SECRETARIA MUNICIPAL DE PLANEJAMENTO URBANO E HABITAÇÃO - SEPLAN



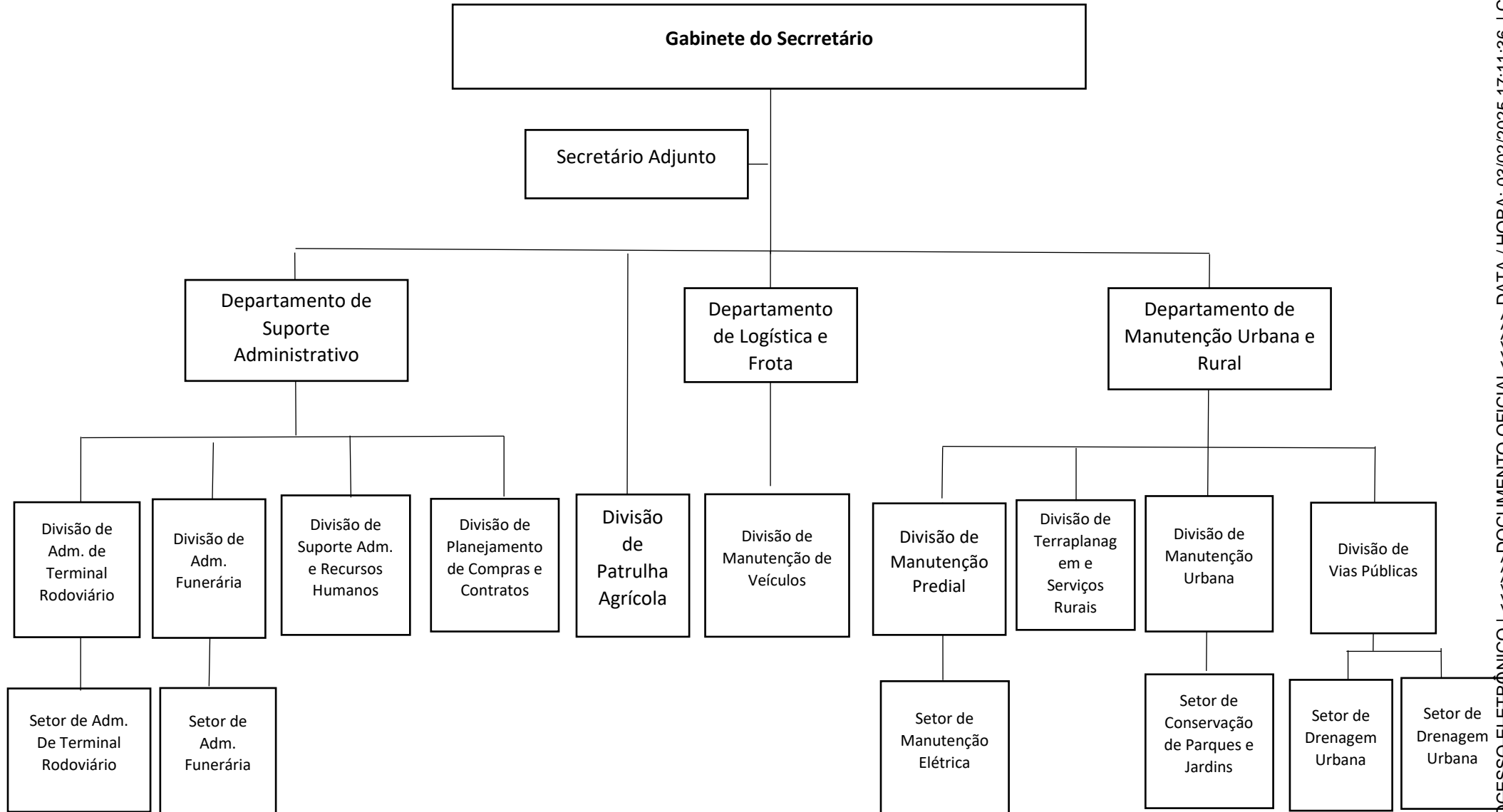
SECRETARIA MUNICIPAL DE RELAÇÕES INSTITUCIONAIS E GABINETE CIVIL - SEGAB



SECRETARIA MUNICIPAL DA SAÚDE - SESAU



SECRETARIA MUNICIPAL DE SERVIÇOS URBANOS - SEMSU



SECRETARIA MUNICIPAL DE TRÂNSITO, TRANSPORTE E SEGURANÇA - SETRAN

